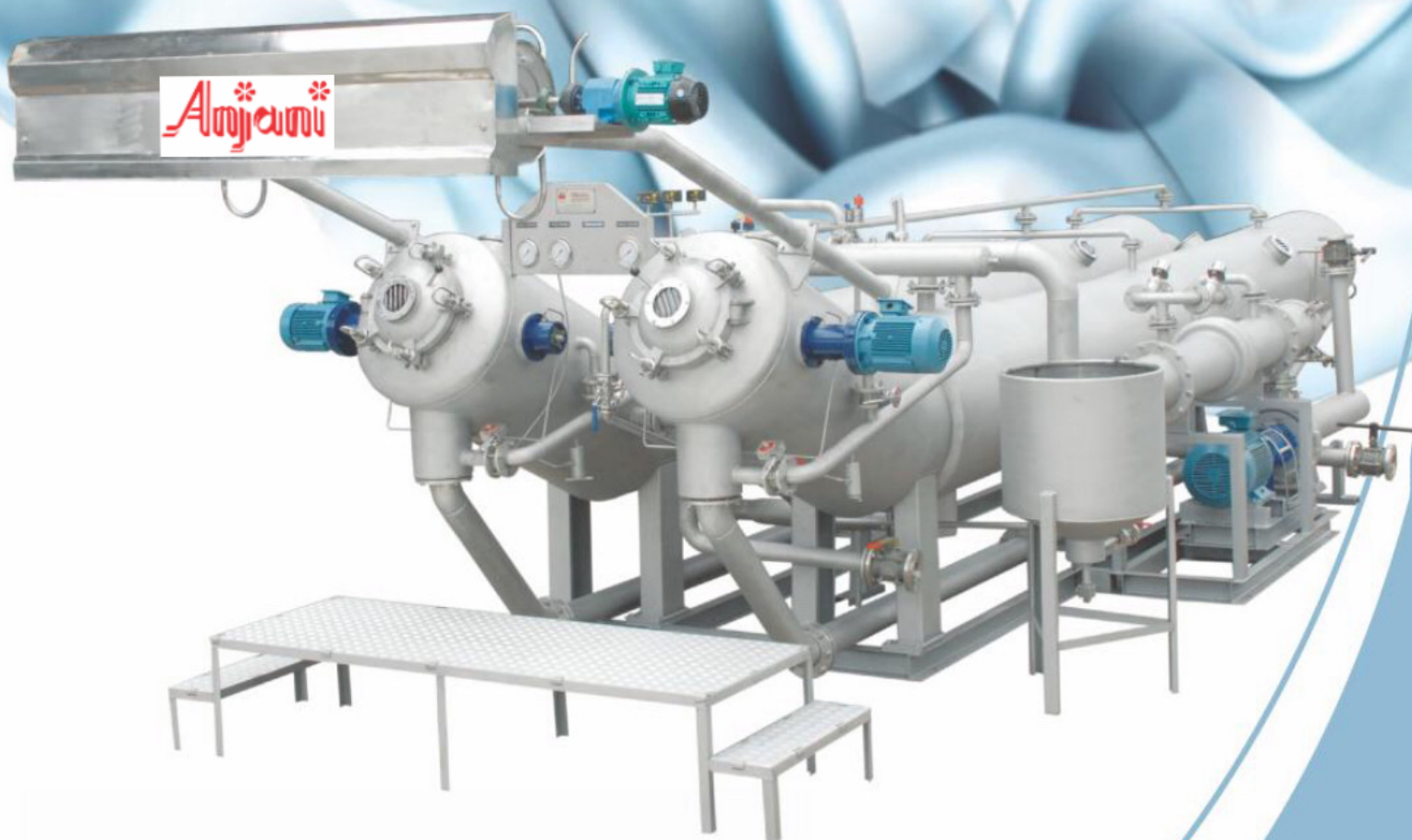


# ARISTOCRATIC Dyeing Machine



**Anjani INDUSTRIES**  
THE DYEING MACHINE COMPANY



## High Speed Long Tube Rapid Dyeing Machine

The LTRD 200 High Speed Dyeing Machine is prime choice for the dyeing of light to heavy weight woven and knitted fabrics, which is sensitive to crease marks such as polyester and micro fibers etc.

The fabric weight per linear meter is ranging from 30 to 650 g/m, fabric speed can be achieved to upto 600m/min.

A fully flooded transport system combined with a adjustable nozzle and infinitely adjustable winen, allowing fabric speed upto 600m/min.

The flooded chambers ensures, even with high loading's a positive and smooth fabric transport. The highly efficient heat exchanger is an ideal supplement to the high fabric speed, ensuring the shortest possible dyeing cycle.

### Design Speciality

- ▶ High Fabric Speed: Maximum Fabric speed of 600 m/min ensures that the optimum loading is achieved within 2 minutes of fabric turn around time.
- ▶ Fast bath turnover time: The circulation pump provides high flow rate to compliment the high fabric speed.
- ▶ Large Kier: The Fabric spreads over the whole length of the kier so that the fabric is not subject to high stack loading, thus reducing the formation of crease mark.
- ▶ Reversing Nozzle: Eject the fabric rope back into the kier to release the tangling automatically.

### Standard Features:

- ▶ Machine body and major parts wetted by dye liquid made of stainless steel 316/316L highly corrosion and resistant.
- ▶ Heavy duty stainless steel (Investment Casting) centrifugal pump (High flow rate) for fast dye liquor circulation.
- ▶ Inside Reel(Lifter Reel) driven by frequency inverter controlled motor.
- ▶ Highly efficient heat exchanger for fast heating and cooling.
- ▶ Reversing nozzle ejects the fabric rope back to release the tangling automatically.
- ▶ Frequency inverter drive for main pump.
- ▶ Control panel with micro processors based programmer.
- ▶ Take off Reel
- ▶ Service Platform.

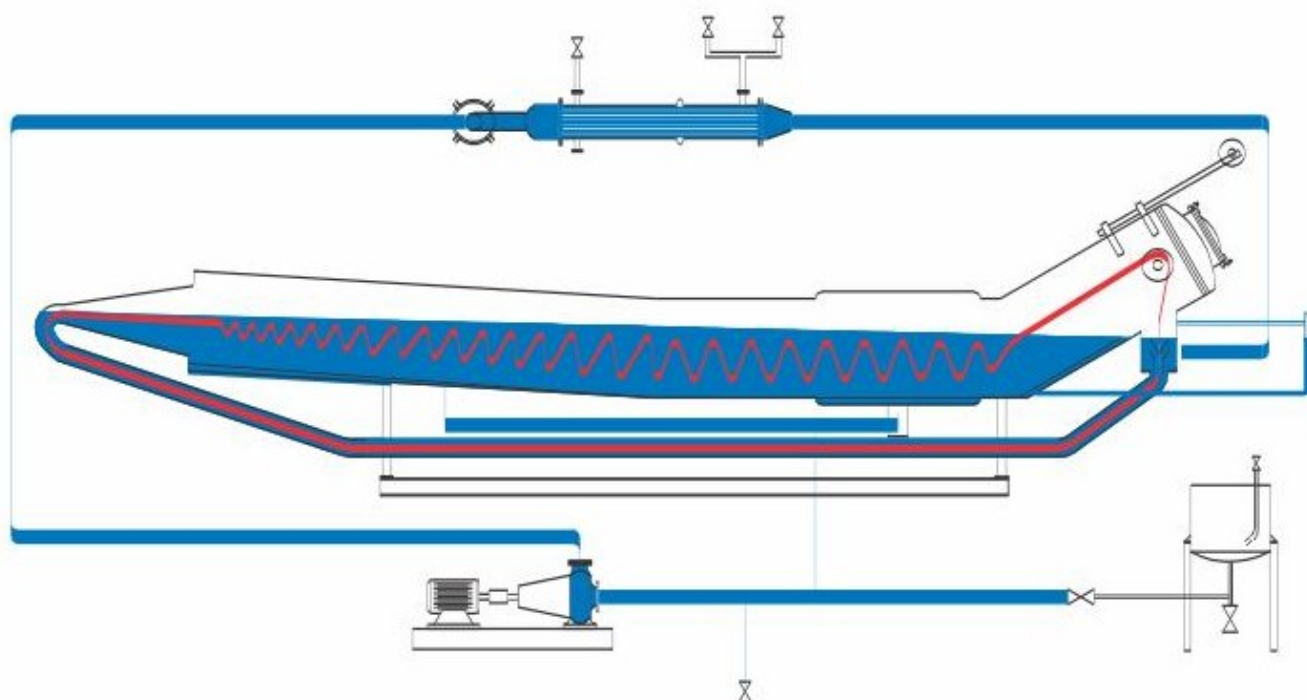


## Options

- ▶ Pneumatics Valve for Water fill and drain
- ▶ Programmable logic controller (PLC)
- ▶ Analog dosing Systems
- ▶ Valve for Selection of Fast and Slow dosing
- ▶ Seam Detector
- ▶ Magnetic Water Level Indicator with level sensor
- ▶ Hot Water Stock Tank

### Flow Diagram

## High Speed Long Tube Rapid Dyeing Machine



## Specifications

Item	Model	LTRD 200	LTRD 250	LTRD 300	LTRD 400	LTRD 500
No. of Tube		One	One	Two	Two	Two
Capacity (Kg)		200Kgs/Batch	250Kgs/Batch	300Kgs/Batch	400Kgs/Batch	500Kgs/Batch
Space Required in MM						
Width (W)		1200 mm	1300 mm	2300 mm	2300 mm	2400 mm
Length (L)		11600 mm	11600 mm	11000 mm	11600 mm	11600 mm
Height (H)		3000 mm	3000 mm	3000 mm	3000 mm	3000 mm



## High Speed Double Tube Rapid Dyeing Machine

The DTRD is Double Rope High Speed Dyeing Machine is the prime choice for the processing of light to heavy weight woven and knitted fabrics.

The Double Rope design ensure, even with high machine loadings, a smooth fabric transport. With its short fabric circulation times and 'Flooded' fabric transport system the machine is especially suitable for crease sensitive fabrics made from polyester, polyester blends, Polyamide, micro fibers and lycra blends as well as pile or wool fabrics.

The dyeing chambers of the DTRD are each designed to take two fabric rope. The Loading capacity per tube is dependant on the specific fabric properties and selected machine execution.

A choice of machine sizes offering a wide range of capacities.

### Design Speciality

- ▶ Fast bath turnover time: The circulation pump provides high flow rate to compliments the the high fabric speed.
- ▶ Large Kier: The Fabric spreads over the entire length of the kier so that fabric is not subject to high stack loading, thus reducing the formation of crease mark.
- ▶ Minimum fabric tension: an excellent choice for stress sensitive fabric material owing to low lighting height.
- ▶ Reversing Nozzle: Eject the fabric rope back into the kier to release the tangling automatically.
- ▶ Conveyance tube: Fabric rope immerse in the conveyance tube to complete the dyestuff exchange for evenness.

### Standard Features:

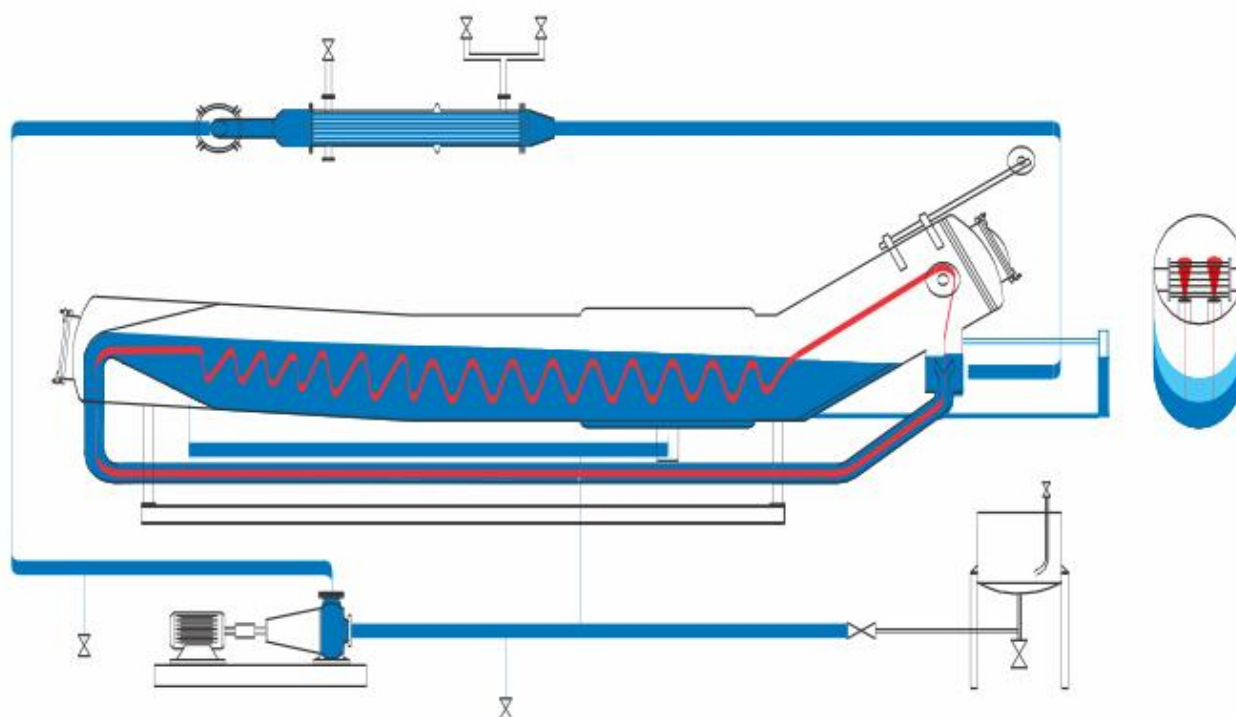
- ▶ Machine body and major parts wetted by dye liquid made of stainless steel 316/316L highly corrosion and resistant.
- ▶ Heavy duty stainless steel (Investment Casting) centrifugal pump (High flow rate) for fast dye liquor circulation.
- ▶ Inside Reel(Lifter Reel) driven by frequency invertor controlled motor.
- ▶ Highly efficient heat exchanger for fast heating and cooling.
- ▶ Reversing nozzle ejects the fabric rope back to release the tangling automatically.
- ▶ Frequency invertor drive for main pump.
- ▶ Control panel with micro processors based programmer.
- ▶ Take off Reel
- ▶ Service Platform.

## Options

- ▶ Pneumatics Valve for Water fill and drain
- ▶ Programmable logic controller (PLC)
- ▶ Analog dosing Systems
- ▶ Valve for Selection of Fast and Slow dosing
- ▶ Seam Detector
- ▶ Magnetic Water Level Indicator with level sensor
- ▶ Hot Water Stock Tank

### Flow Diagram

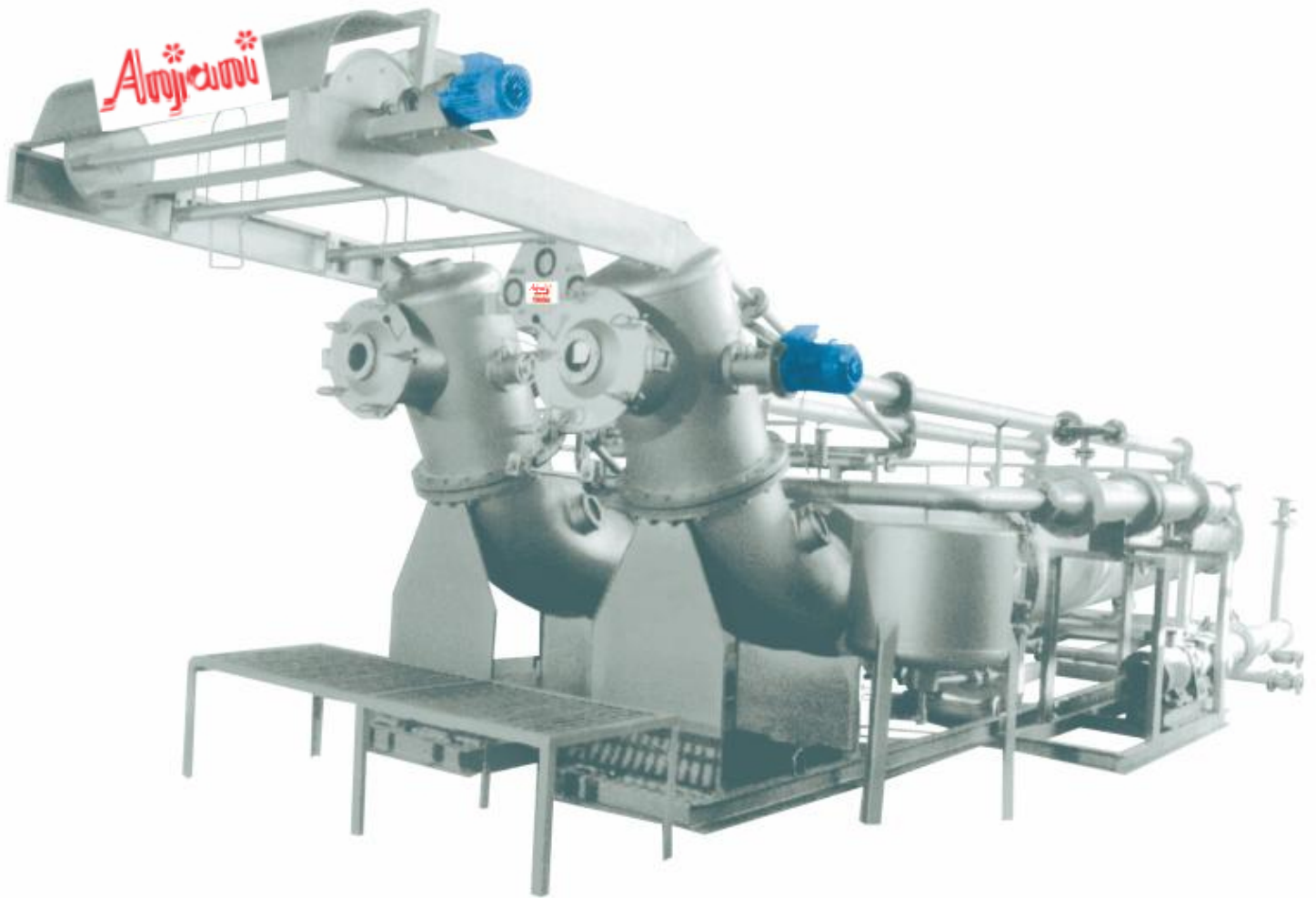
## High Speed Double Tube Rapid Dyeing Machine



## Specifications

Item	Model	DTRD 250	DTRD 300	DTRD 400	DTRD 500
No. of Tube		One	One	One	Two
Capacity (Kg)		250Kgs/Batch	300Kgs/Batch	400Kgs/Batch	500Kgs/Batch
Space Required in MM					
Width (W)		1500 mm	1500 mm	1500 mm	2560 mm
Length (L)		9700 mm	10200 mm	12000 mm	9700 mm
Height (H)		3100 mm	3100 mm	3100 mm	3100 mm





## Long Tube Soft Flow Dyeing Machine (Dual Flow)

The LTSD is a long tube soft flow dyeing Machine that handles the fabric very gently, with the design of the fabric is very suitable for normal knitting and spandex fabrics for example cotton + lycra, rayon + lycra, rayon + lycra, polyester + lycra, nylon + lycra.... etc. A wide range of machine models are available to process very heavy & very light fabrics suitable for knitting fabric from 50-600 g/m.

### Design Speciality

- ▶ Short chamber, short fabric length, low liquor ratio and easy operation.
- ▶ Low height, low tension, low shortage, easy to achieve required final fabric weight.
- ▶ Large kier door, provide easy access for people to enter and exit.
- ▶ Machine can operate smoothly even when nozzle pressure is under 1 kg/cm<sup>2</sup> very suitable for spandex and low tension fabric running requirement.

### Standard Features:

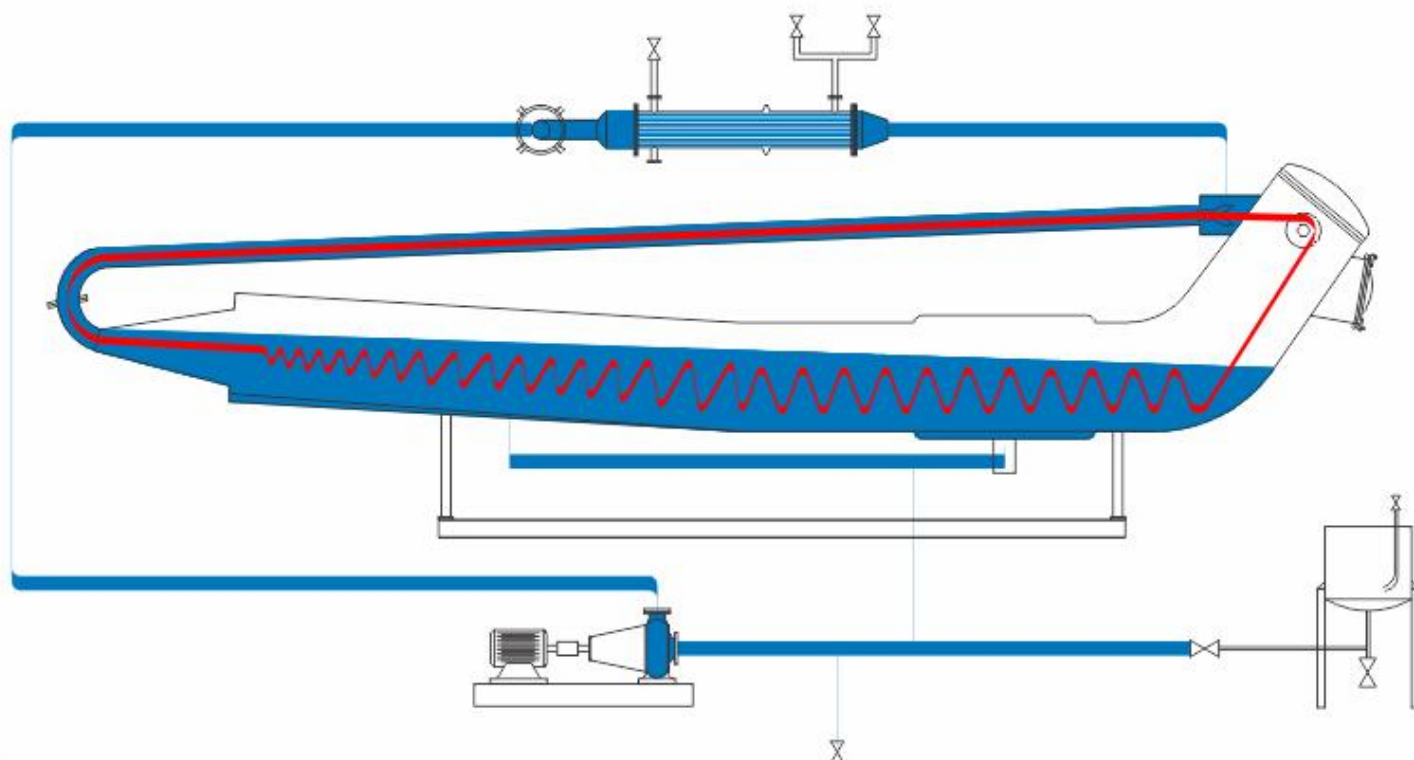
- ▶ Machine body and major parts wetted by dye liquid made of stainless steel 316/316L highly corrosion and resistant.
- ▶ Heavy duty stainless steel centrifugal pump (High flow rate).
- ▶ Inside Reel (Lifter Reel) driven by frequency inverter controlled motor.
- ▶ High efficient heat exchanger for fast heating and cooling.
- ▶ Frequency inverter drive for main pump.
- ▶ Control panel with micro processors based programmer.
- ▶ Take of Reel.
- ▶ Service platform.

## Options

- ▶ Pneumatics valve for water fill and drain.
- ▶ Programable logic controller (PLC)
- ▶ Analog dosing system.
- ▶ Valve for selection of Fast and Slow dosing.
- ▶ Seam Detector.
- ▶ Magnetic water level indicator with level sensor.
- ▶ Hot water stock tank.

### Flow Diagram

## Long Tube Soft Flow Dyeing Machine (Dual Flow)



## Specifications

Item \ Model	LTFS 200	LTFS 250	LTFS 300	LTFS 400	LTFS 500
No. of Tube	One	One	Two	Two	Two
Capacity (Kg)	200Kgs/Batch	250Kgs/Batch	300Kgs/Batch	400Kgs/Batch	500Kgs/Batch
Space Required in MM					
Width (W)	1500 mm	1600 mm	2600 mm	2600 mm	2700 mm
Length (L)	11600 mm	11600 mm	11000 mm	11600 mm	11600 mm
Height (H)	3000 mm	3000 mm	3000 mm	3000 mm	3000 mm



**Anjani INDUSTRIES**

Regd. Off. & Works  
Plot No. 984, Road No. 58,  
G.I.D.C. Sachin, Surat - 394 230  
Gujarat, India.  
Ph.: +91 81548 88370, +91 70960 07670  
Email:- [info@anjaniindustries.in](mailto:info@anjaniindustries.in)  
Website:- [www.anjaniindustries.in](http://www.anjaniindustries.in)